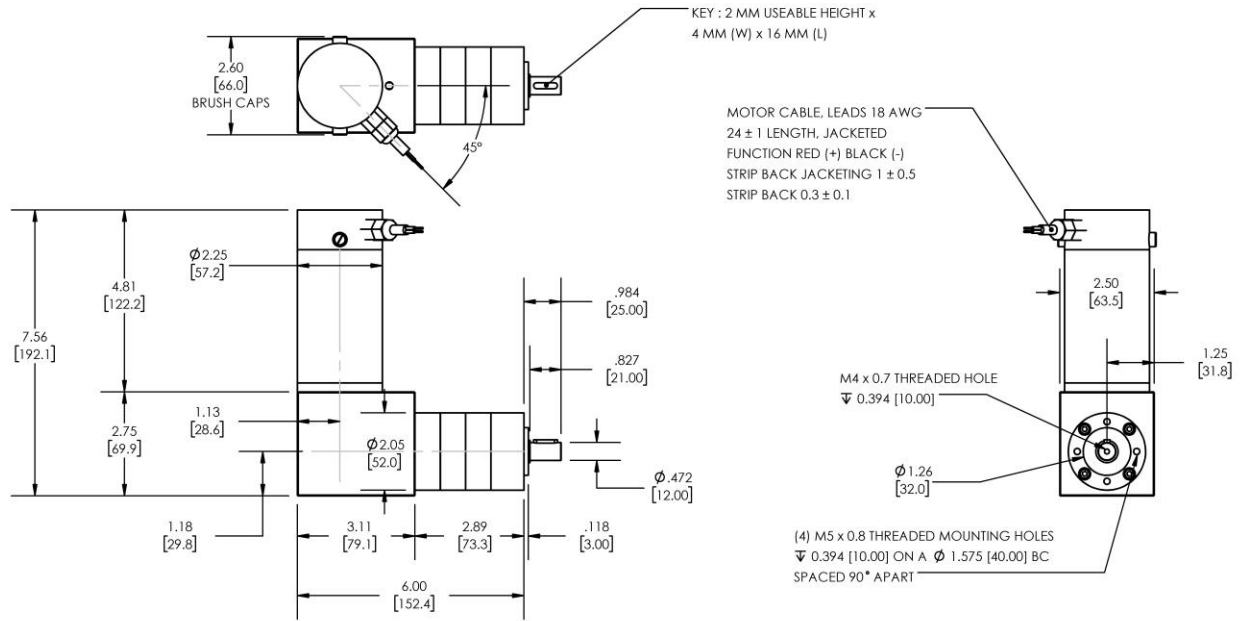


Model Number:

MMP D22-490D-36V GRA52-100



DIMENSIONS ARE INCHES [MM] UNLESS OTHERWISE STATED

PLANETARY GEARMOTOR OUTPUT PARAMETERS:	VALUE	UNITS	TOLERANCE
Gearhead Ratio (exact)	99.50 : 1		
Gearhead Shaft Output Speed (at full-load)	49	RPM	MAX
Gearmotor Rated Continuous Torque	218	In-Lbs	MAX
Gearmotor Rated Peak Torque	443++	In-Lbs	----
Gearhead Standard Backlash	48	Arc Minutes	MAX
Gearhead Efficiency	70%	----	----
Output Shaft Radial Load Capacity	102	Lbs	MAX
Output Shaft Axial Load Capacity	34	Lbs	MAX
Gearmotor Total Weight	6.9	Lbs	MAX

++ All Peak Torque values are dependent upon duty. Contact our sales office for details.

DC MOTOR PERFORMANCE PARAMETERS:	VALUE	UNITS	TOLERANCE
Rated DC Voltage	36	DC VOLTS	----
Rated Continuous Current	6.5	AMPERES	----
No-Load Speed	5806	RPM	MAX
Rated Speed	4883	RPM	+/- 15%
Rated Continuous Power Out	181	WATTS	+/- 15%
Rated Continuous Torque	50	OZ-IN	----
Peak Torque (motor only)	228	OZ-IN	----
No-Load Current	0.52	AMPERES	MAX
Back EMF Constant (Ke)	6.2	V/KRPM	+/- 10%
Torque Constant (Kt)	8.4	OZ-IN/AMP	+/- 10%
DC Armature Resistance	0.88	OHMS	+/- 15%
Armature Inductance	1.30	mH	+/- 15%
Armature temperature	155	DEG. C	MAX

NOTES:

- ENCODER & BRAKE OPTIONS AVAILABLE - [FOLLOW THIS LINK FOR DETAILS](#)
- NEMA MOUNTING FLANGE OPTION AVAILABLE - [FOLLOW THIS LINK FOR DETAILS](#)

MIDWEST MOTION PRODUCTS, INC

DESIGN, MANUFACTURING & DISTRIBUTION - MOTION CONTROL EQUIPMENT

www.midwestmotion.com

email: sales@midwestmotion.com